



RIVER GLEN

Facade images are for illustrative purposes only and may differ from the actual facade included on tender.



STANDARD FACADE

YAMBA 270

THE PROPERTY FEATURES EVERYTHING YOU NEED FOR COMFORTABLE LIVING. INTERIOR SPACES HAVE BEEN CAREFULLY PLANNED TO MAXIMIZE LIVING SPACE, WHILE CONNECTING SEAMLESSLY TO THE OUTDOORS.



UPGRADED FACADE

COMFORT INCLUSIONS:

- ✓ Fixed site cost and BASIX;
- ✓ 2600 mm ceiling ground floor;
- ✓ Ducted air conditioner;
- ✓ Down-light package to Kitchen/Living;
- ✓ Caesarstone kitchen bench top;
- ✓ Carpet to bedrooms;
- ✓ Tiles to Living areas;
- ✓ Mirrored Sliding robes;
- ✓ Clothesline and Letter box;
- ✓ Turf front and backyard;
- ✓ Colored driveway;
- ✓ Six months completion;

KEY FACTS:

- ✓ Double Storey
- ✓ 6 bedrooms
- ✓ 4 bathrooms
- ✓ Double Garage
- ✓ 270 Sq M
- ✓ 16m and overwide blocks
- ✓ Exterior width 14.15m
- ✓ Exterior length 12.45m



Paula James
Sales & Marketing Manager
m: 0413 518 807
e: pj@wjgroup.com.au
www.riverglen.dev

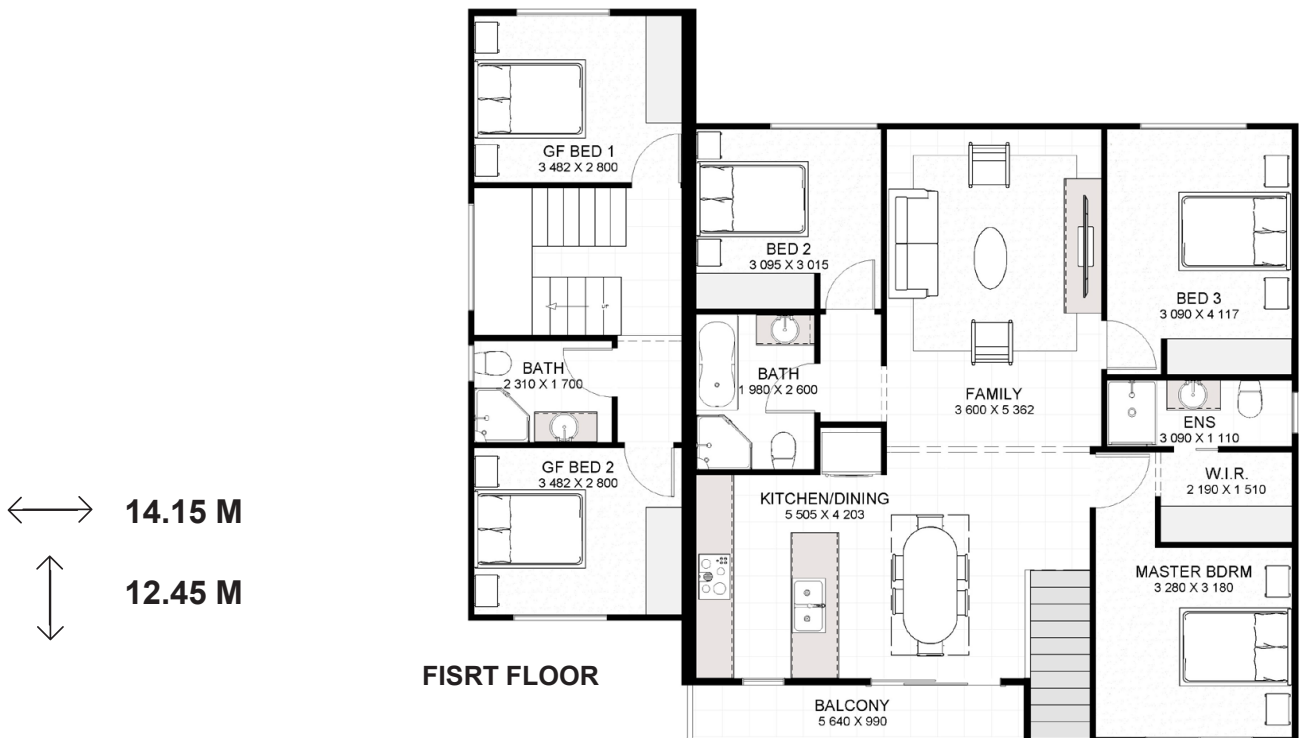
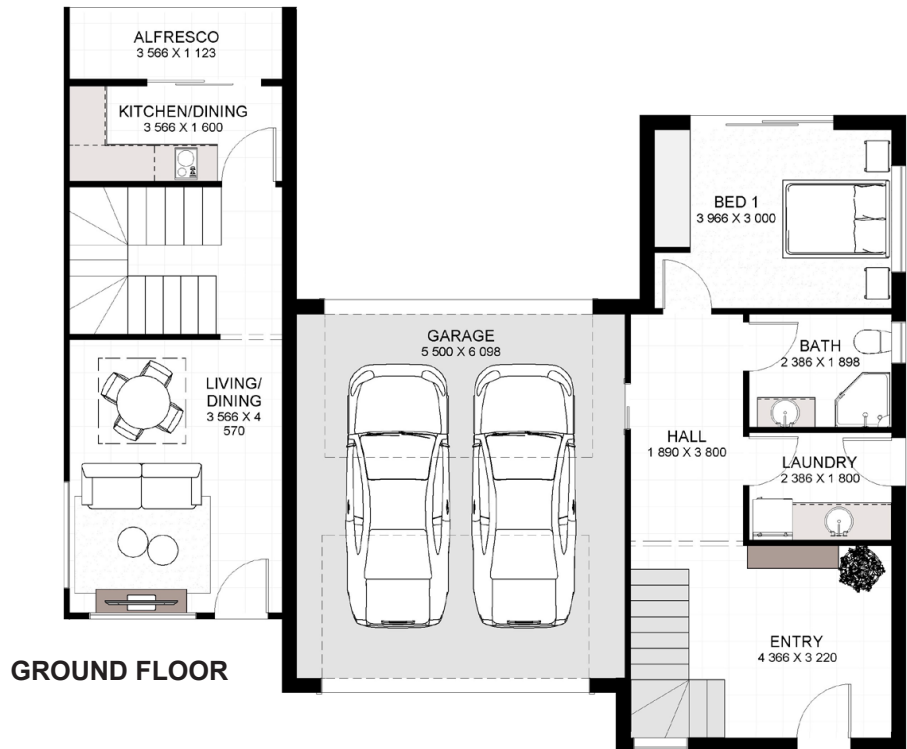


The content of this brochure was produced prior to planning approval, statutory approval, and commencement of construction. Photographs, illustrations, and plans are for illustrative purposes and should be used as a guide only. Information and images relating to the public park areas within, and the surrounding areas are indicative only. All outlines depicting areas are indicative only. Prospective purchasers should make their own inquiries. Package prices are subject to availability. Developer and builder reserve the right to change prices and inclusions without notice. All rights reserved.

RIVER GLEN

YAMBA 270

FLOOR AREAS	SQM
Ground Floor	89
First Floor	107
Granny Flat	74
TOTAL AREA	270



↔ 14.15 M
 ↑↓ 12.45 M



Paula James
 Sales & Marketing Manager
 m: 0413 518 807
 e: pj@wjgroup.com.au
 www.riverglen.dev

