



RIVER GLEN

Facade images are for illustrative purposes only and may differ from the actual facade included on tender.



STANDARD FACADE

YAMBA 306

THE PROPERTY FEATURES EVERYTHING YOU NEED FOR COMFORTABLE LIVING. INTERIOR SPACES HAVE BEEN CAREFULLY PLANNED TO MAXIMIZE LIVING SPACE, WHILE CONNECTING SEAMLESSLY TO THE OUTDOORS.



UPGRADED FACADE

COMFORT INCLUSIONS:

- ✓ Fixed site cost and BASIX;
- ✓ 2600 mm ceiling ground floor;
- ✓ Ducted air conditioner;
- ✓ Down-light package to Kitchen/Living;
- ✓ Caesarstone kitchen bench top;
- ✓ Carpet to bedrooms;
- ✓ Tiles to Living areas;
- ✓ Mirrored Sliding robes;
- ✓ Clothesline and Letter box;
- ✓ Turf front and backyard;
- ✓ Colored driveway;
- ✓ Six months completion;

KEY FACTS:

- ✓ Double Storey
- ✓ 6 bedrooms
- ✓ 4 bathrooms
- ✓ Double Garage
- ✓ 306 Sq M
- ✓ 18m wide blocks
- ✓ Exterior width 16.40m
- ✓ Exterior length 11.60m



Paula James
Sales & Marketing Manager
m: 0413 518 807
e: pj@wjgroup.com.au
www.riverglen.dev

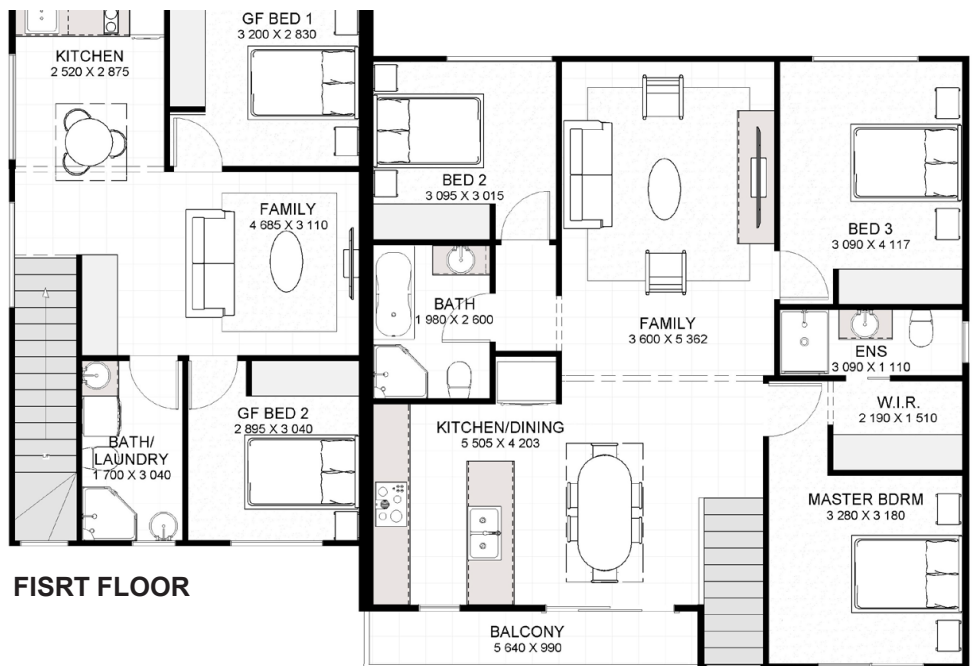
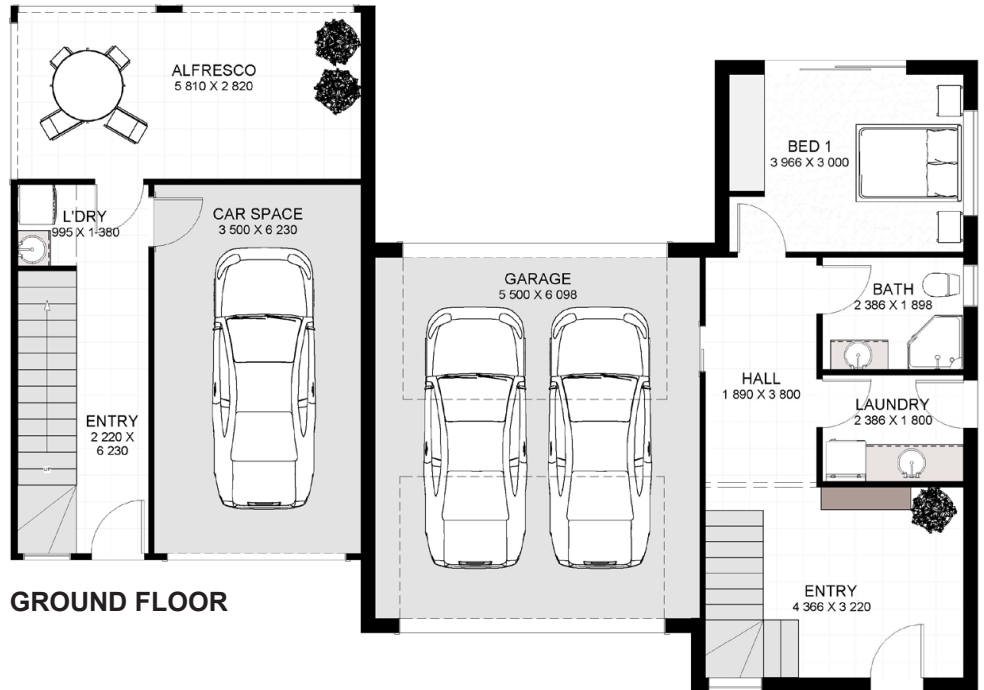




RIVER GLEN

YAMBA 360

FLOOR AREAS	SQM
Ground Floor	108
First Floor	88
Granny Flat	110
TOTAL AREA	306



↔ 16.40 M
 ↑↓ 11.60 M



Paula James
 Sales & Marketing Manager
 m: 0413 518 807
 e: pj@wjgroup.com.au
 www.riverglen.dev

