


# ST JAMES PARK



 5 bedrooms

 2.5 bathrooms

 Double Garage

 309.98 Sq M

## IVY

The property features everything you need for comfortable living. Interior spaces have been carefully planned to maximize living space, whilst connecting seamlessly to the outdoors.



## KEY FACTS

- ✓ Single Storey
- ✓ 5 bedrooms
- ✓ 2.5 bathrooms
- ✓ Double Garage
- ✓ 309.98 Sq M
- ✓ Exterior width 13.00m
- ✓ Exterior length 24.50m



Paula James  
Sales & Marketing Manager  
m: 0413 518 807  
e: [pj@wjgroup.com.au](mailto:pj@wjgroup.com.au)  
[www.stjamespark.dev](http://www.stjamespark.dev)

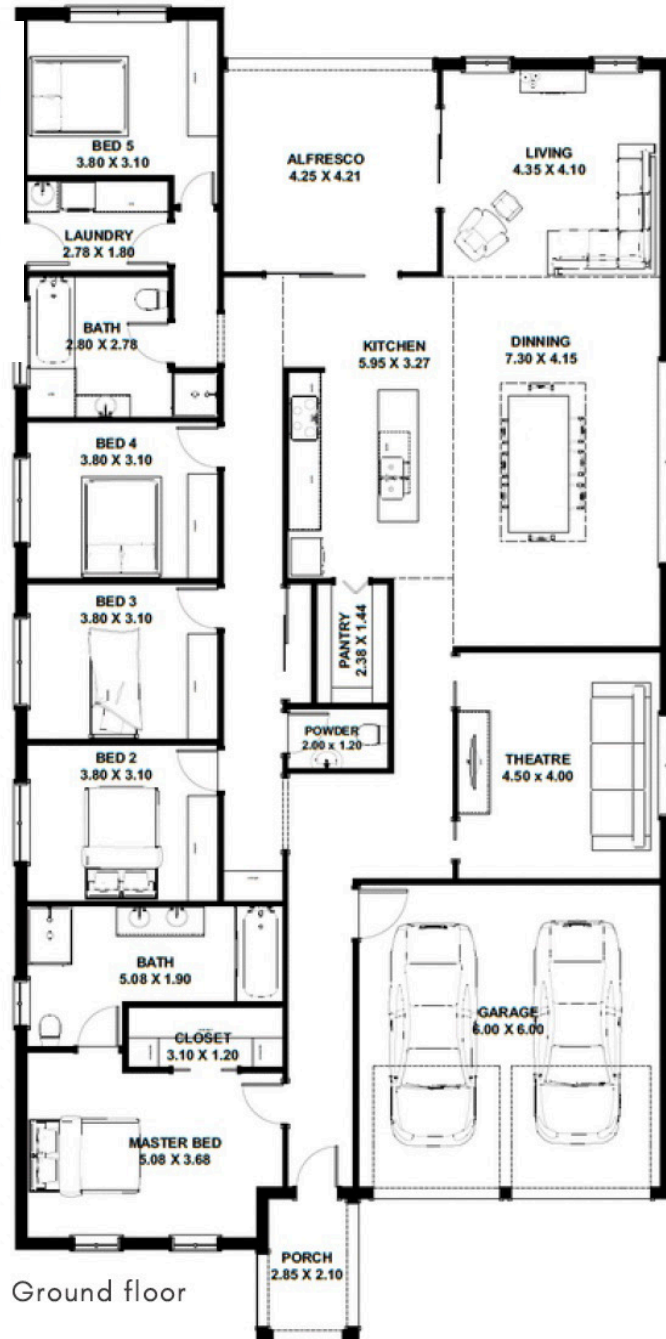


# ST JAMES PARK

## IVY 310

### FLOOR AREAS

Ground Floor	304 sqm
Alfresco	5.98 sqm
<b>Total Floor Area</b>	<b>309.98 sqm</b>



13.00 M

24.50 M



Paula James  
 Sales & Marketing Manager  
 m: 0413 518 807  
 e: [pj@wjgroup.com.au](mailto:pj@wjgroup.com.au)  
[www.stjamespark.dev](http://www.stjamespark.dev)

