

# ST JAMES PARK



## LA VERNA

### INCLUSIONS:

- ✓ M class slab on ground
- ✓ 2600 mm ceiling ground floor;
- ✓ Ducted air conditioner;
- ✓ Down-light for Ground Floor;
- ✓ Caesarstone kitchen bench top;
- ✓ Carpet to First Floor;
- ✓ Tiles to whole Ground Floor;
- ✓ Mirrored Sliding robes;
- ✓ Clothes line and Letter box;
- ✓ Turf front and backyard;
- ✓ Colored driveway;
- ✓ Six months completion;



## KEY FACTS

- ✓ Double Storey
- ✓ 4 bedrooms
- ✓ 3 bathrooms
- ✓ Double Garage
- ✓ 212 Sq M
- ✓ Exterior width 10.80m
- ✓ Exterior length 16.54m



Paula James  
Sales & Marketing Manager  
m: 0413 518 807  
e: [pj@wjgroup.com.au](mailto:pj@wjgroup.com.au)  
[www.stjamespark.dev](http://www.stjamespark.dev)



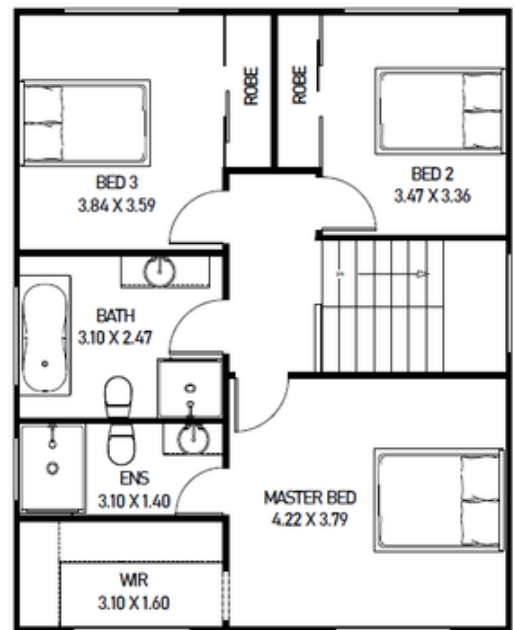
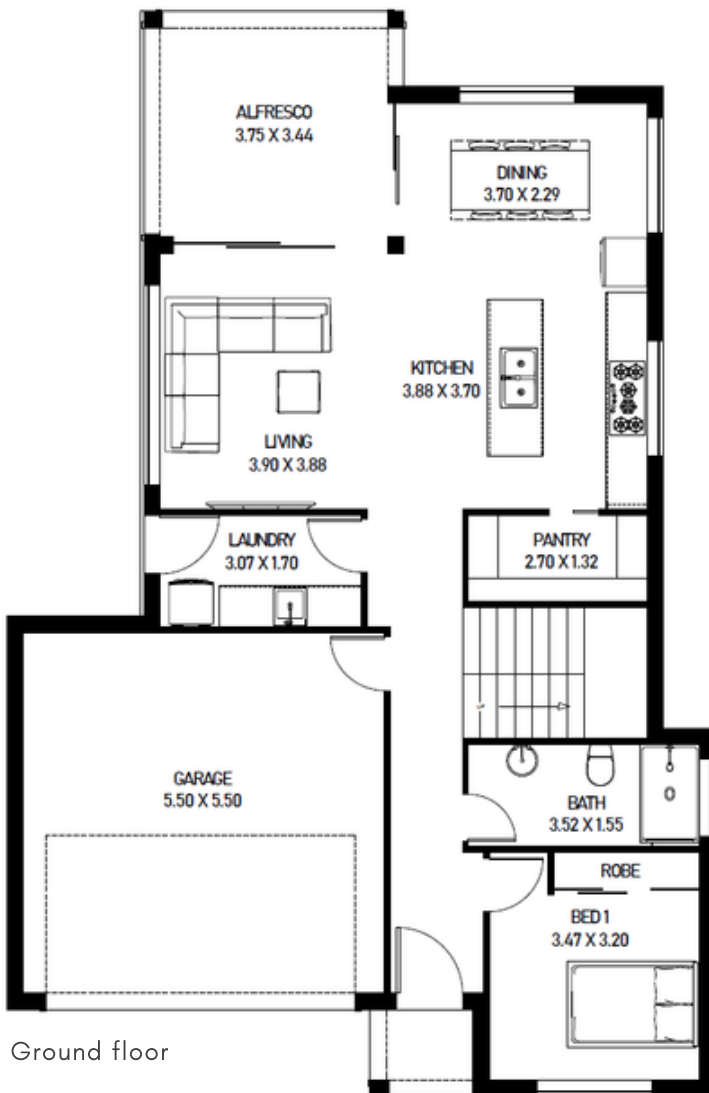
# ST JAMES PARK

## LA VERNA 212

### FLOOR AREAS

Ground Floor	140.00 sqm
First Floor	72.00 sqm

Total Floor Area 212.00 sqm



Paula James  
 Sales & Marketing Manager  
 m: 0413 518 807  
 e: [pj@wjgroup.com.au](mailto:pj@wjgroup.com.au)  
[www.stjamespark.dev](http://www.stjamespark.dev)

